



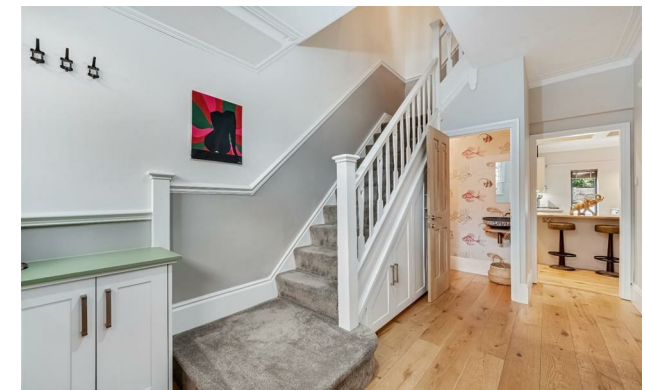
jordan fishwick

WEST DIDSBURY
Darlington Road



Darlington Road, West Didsbury, M20 1JB

Guide Price £670,000



The Property

A stunning, bay fronted, five bedroom, two bathroom house forming part of a quiet tree lined cul-de-sac in a popular location, within a short stroll from the centre of Burton Road. The vibrant shops, bars and restaurants of West Didsbury, along with the Metrolink are all close at hand. 1546 sq ft. The property retains a wealth of beautiful period features and character, combined with todays more modern comforts. The stylish interior design includes a generous entrance hall with concealed storage and downstairs WC off, living room with bay window and attractive log burner, open plan bespoke kitchen and dining area with a comprehensive range of units, pantry cupboard and central island, a first floor landing area that gives way to four bedrooms and the main bathroom with contemporary suite and chrome fittings, whilst at second floor level is a further excellent double bedroom with exposed brick chimneybreast and modern en-suite shower room. To the front of the property is a small walled garden, whilst to the rear is a landscaped courtyard style walled garden with block paved seating area, stone chipped section and raised flowerbeds.

Directions

M20 1JB



- Beautifully appointed period home
- Period features & characteristics
- Five bedrooms & two bathrooms
- Living room with bay window
- Open plan bespoke kitchen/dining room
- Generous entrance hall with WC off
- Double glazing & gas central heating
- Landscaped walled garden
- Located on a tree lined cul-de-sac
- Council tax band - D / EPC - C

Postcode - M20 1JB

EPC Rating - C

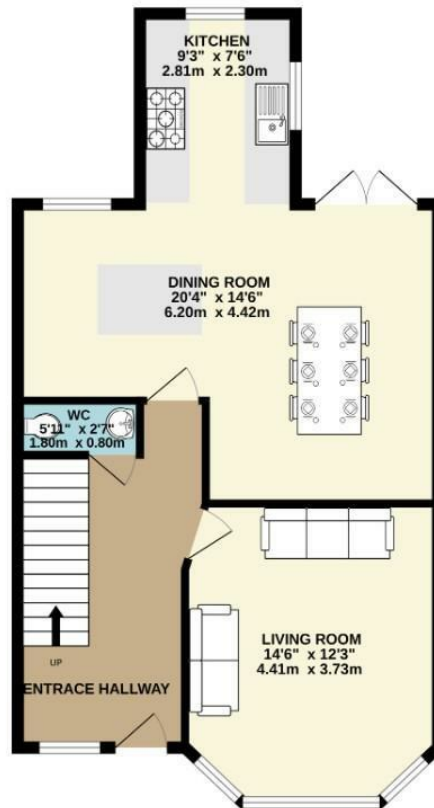
Floor Area - 1546.00 sq ft

Local Authority - Manchester City Council

Council Tax - D



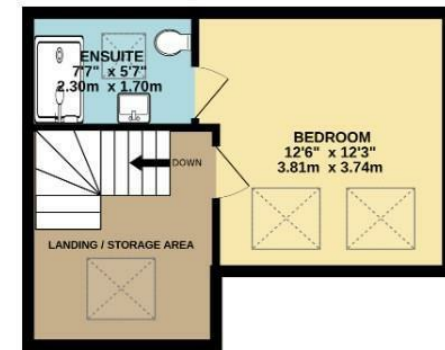
GROUND FLOOR
629 sq.ft. (58.5 sq.m.) approx.



1ST FLOOR
629 sq.ft. (58.5 sq.m.) approx.



2ND FLOOR
287 sq.ft. (26.7 sq.m.) approx.



TOTAL FLOOR AREA : 1546 sq.ft. (143.6 sq.m.) approx.
Measurements are approximate. Not to scale. Illustrative purposes only
Made with Metropix ©2025



These particulars are believed to be accurate but they are not guaranteed and do not form a contract. Neither Jordan Fishwick nor the vendor or lessor accept any responsibility in respect of these particulars, which are not intended to be statements or representations of fact and any intending purchaser or lessee must satisfy himself by inspection or otherwise as to the correctness of each of the statements contained in these particulars. Any floorplans on this brochure are for illustrative purposes only and are not necessarily to scale.

Offices also at: Wilmslow, Macclesfield, Hale, Sale, Chorlton, Glossop, Manchester & Salford

757-759 Wilmslow Road, Didsbury Village, Manchester

0161 445 4480

didsbury@jordanfishwick.co.uk
www.jordanfishwick.co.uk